

Meat Pens 101



Common Commercial Breeds

- Californians
- New Zealand
- Satins
- Champagne & Creme D'Argents
- American Chins
- Silver Martens



Breeding

- Figure out the date of your fair or show
- Using a calendar, figure out what 100 days before the fair would be

Example:

Fair date: June 1, 2025

-100 days

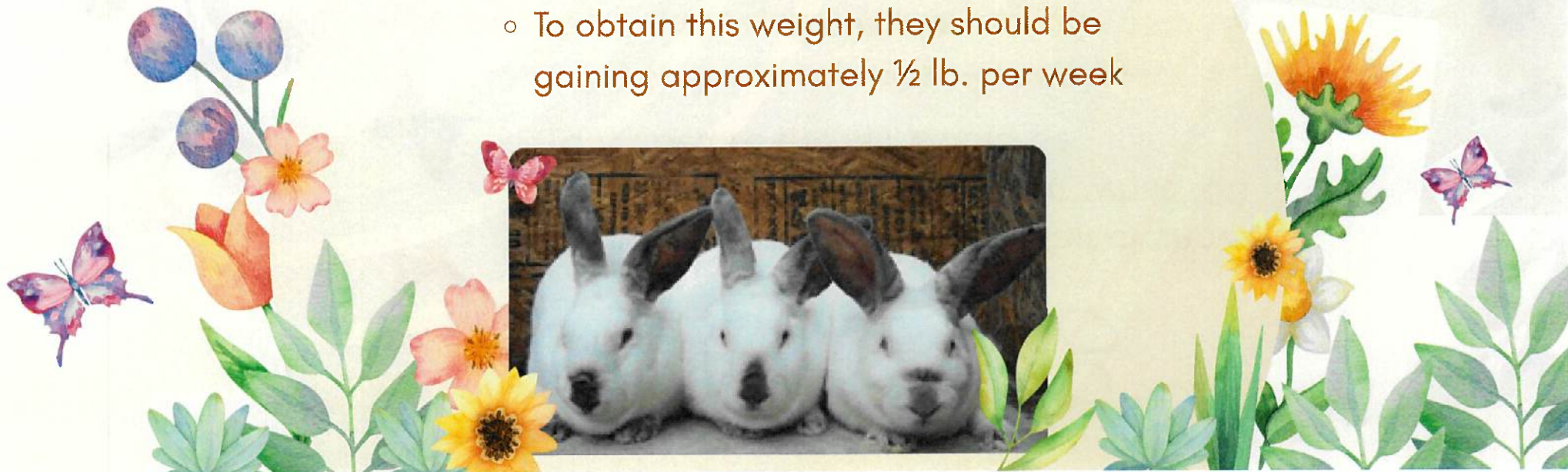
Breeding date: **February 21, 2025**

Reminder!

- Double-check rules and ages
- Some fairs don't follow arba

What is a Meat Pen?

- Pen of 3 rabbits
- Same age, breed, variety, time, size
- All three rabbits should be 3-3.5lbs
 - To obtain this weight, they should be gaining approximately ½ lb. per week

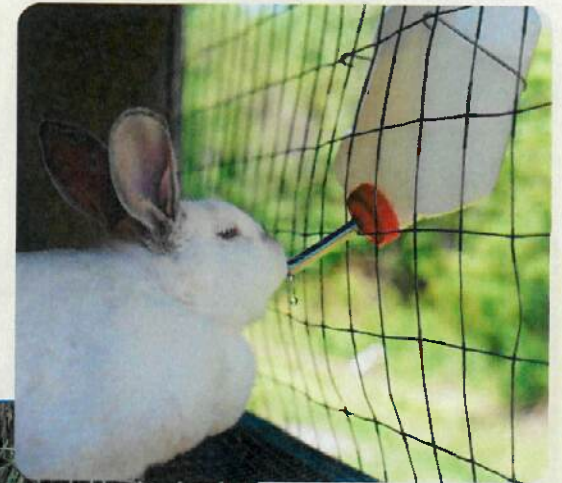


YOU'VE BRED YOUR RABBITS FOR THE FAIR...

Now What?

Feeding Basics:

- Small alfalfa-based pellet
- J feeders or crocks
- Free feed
- Lots of water
- Hay
- Supplements



Weighing Your Rabbits

Invest in a good scale! And remember to...

- Track weights every day- adjust as needed
- Keep your rabbits moving around
- Exercise! Exercise! Exercise!



Not Gaining Weight?

Try these:

- Calfmana
- Sunflower seeds
- Oats
- Banana
- Sweet potatoes
- Weight supplement
- Wheat bread soaked in milk



Gaining Too Much Weight?

Try these tricks:

- Mix oats and pellets
- Feed 1/4-1/2 cup day
- Hay
- Hold water & hay on weigh in day



It's Weigh in Day!

Reminder!

- Make sure all rabbits are no more than 1oz apart
- Example:
 - Ideal weight: 5, 5, 5.1
 - Not ideal weight: 5, 5.3, 5.5
- Are your rabbits too light?

